

MAXPULL WINCH[®]



MAXPULL WINCH

VS.

other brands

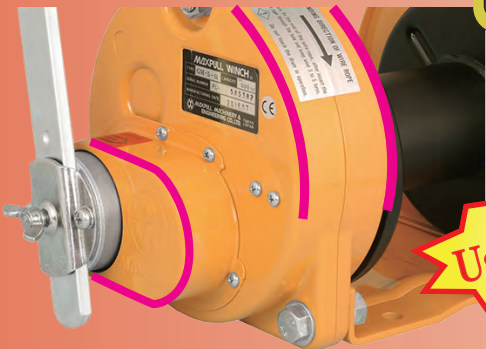


MAXPULL MACHINERY & ENGINEERING CO., LTD.

マックスプル工業株式会社

Compare the Features of MAXPULL Winches

MAXPULL Winch



The round ergonomic shape disperses the load evenly.

Body Design

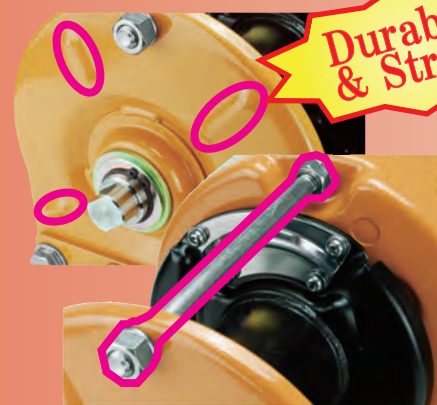


other brands

The square shape creates load stress on the corners.

User Friendly

MAXPULL Winch



Durable & Strong

Durability

Steel plates are punched and bent to create the main body and drum. There are no reinforcements to strengthen the body.

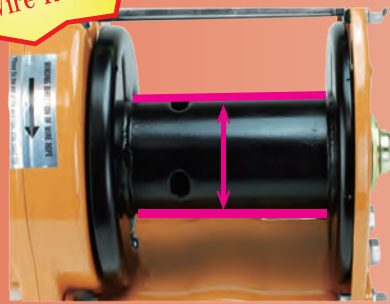
other brands



The body of the winch is manufactured with carefully selected steel or stainless steel. A stay bolt is attached to the upper part of the body and rib patterns are pressed into the body to provide additional strength.

MAXPULL Winch

Extend the life of the Wire Rope

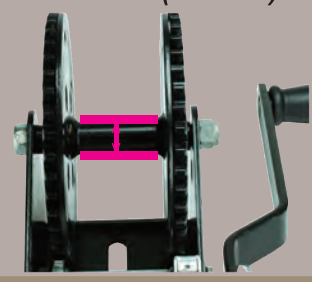


Winch Drum

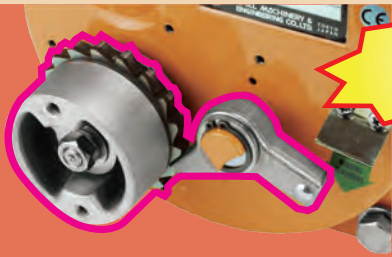
All winches are manufactured with a wide diameter drum core. By having a larger drum, the wire ropes wind with more space and extends the life of wire ropes. Drum diameter is between 60.5 mm – 89.1 mm (2.4 inch – 3.5 inch).

Small diameter drums apply higher force to the wire ropes when they are wound tightly and shortens the life of the wire rope. Drum diameter is around 20 mm (0.8 inch).

other brands



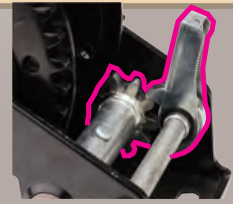
MAXPULL WINCH



Reliable Working Efficiency

Brake System

other brands



MAXPULL Winch

Brake is automatically applied on and off. Automatic brake is covered and not exposed to the outside. Stays dust and dirt free.

Manually operated brakes can cause accidents if the user forgets to lock the brake. Brakes are exposed to the outside elements and can get covered with dirt and dust.

Simple pinching system is not safe as wire ropes can slip out.



other brands

MAXPULL Winch

The double-locking mechanism consists of a special drum that maintains extra winding and our unique anchoring plate to hold the wire rope in place.

High Safety

Wire Rope Anchoring Method



MAXPULL Winch

High Reliability



Gear

Gear is exposed to the outside and accidents to the user may occur. The steel gears are exposed to rain and dust so rusting is a common issue.

Gear is stored in the gear case and is not exposed to the outside. The gears are manufactured from chromium-molybdenum steel and the teeth surface are carburized and quenched. Not only does this strengthen the gears, but they are resistant to wear and impact.

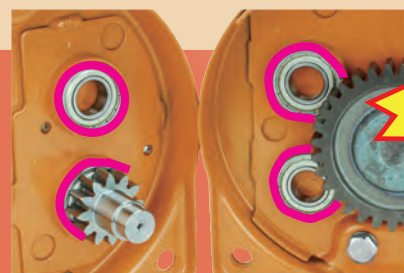
other brands



other brands

Bearing

Ball bearings are not used. Rotation will be negatively affected with rust and wear.



Smooth

MAXPULL Winch

Ball bearings are used on all rotating parts such as gear and shaft. The winch rotation is smooth and provides outstanding durability against wear.

Gravity is our only rival !

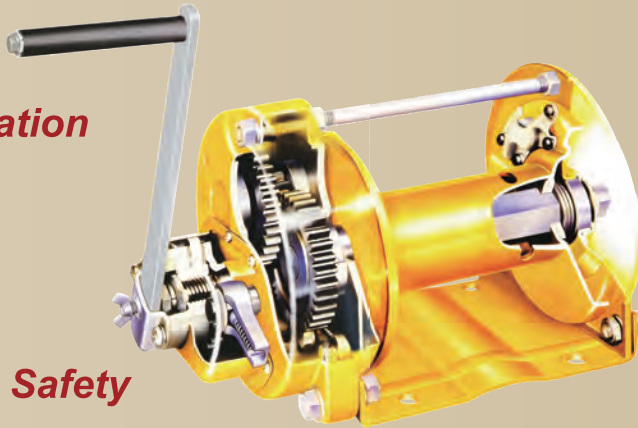
Highest Quality Manual Winch in the World

**MAXPULL
Winch**

Easy Operation

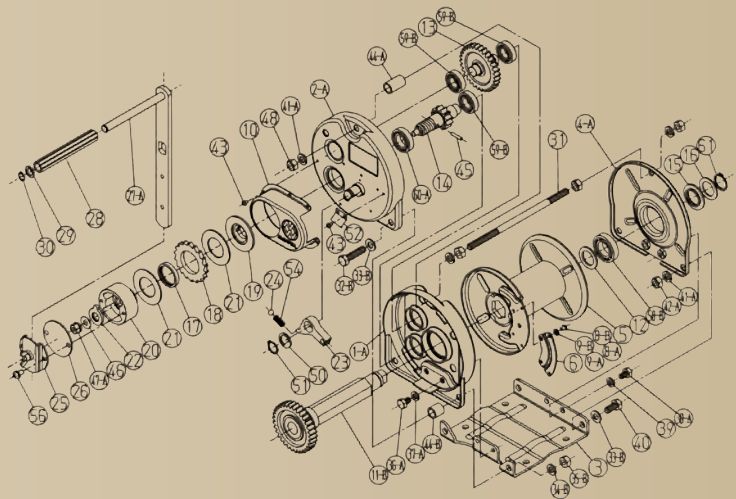
Outstanding Durability

Reliable Safety



Low Maintenance

*Maxpull winch is assembled in
more than 70 parts.
Flexible maintenance and repair.*



Manufacturer



MAXPULL MACHINERY & ENGINEERING CO., LTD.

マックスプルエ業株式会社

1296 - 22, Nakaya, Nishifukai, Nagareyama-shi, Chiba
270-0107, JAPAN
TEL: +81-4-7186-6797 FAX: +81-4-7186-6798
E-mail: info@maxpull.co.jp
<http://www.maxpull.co.jp>

Quality Certificate 



MAXPULL URL

MAXPULL USA CORPORATION

788 110th Ave NE Suite N1404 Bellevue,
WA 98004
TEL: +1-425-443-2111
E-mail: maxpull.usa@gmail.com
<http://www.maxpullusa.com>



MAXPULL USA URL

● Because of continued product improvement, we change the specifications, dimension and appearance without notice.

MAXPULL winches are not for lift or move people. Also do not lift loads over people.

rev.3. 2018/08, 1K, PS